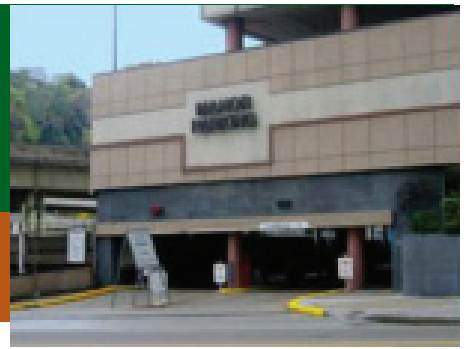


# MANOR COMPLEX GARAGE

Convenient parking in the heart of Downtown Pittsburgh

1.5 blocks from Grant Street  
3 blocks from Consol Energy Center

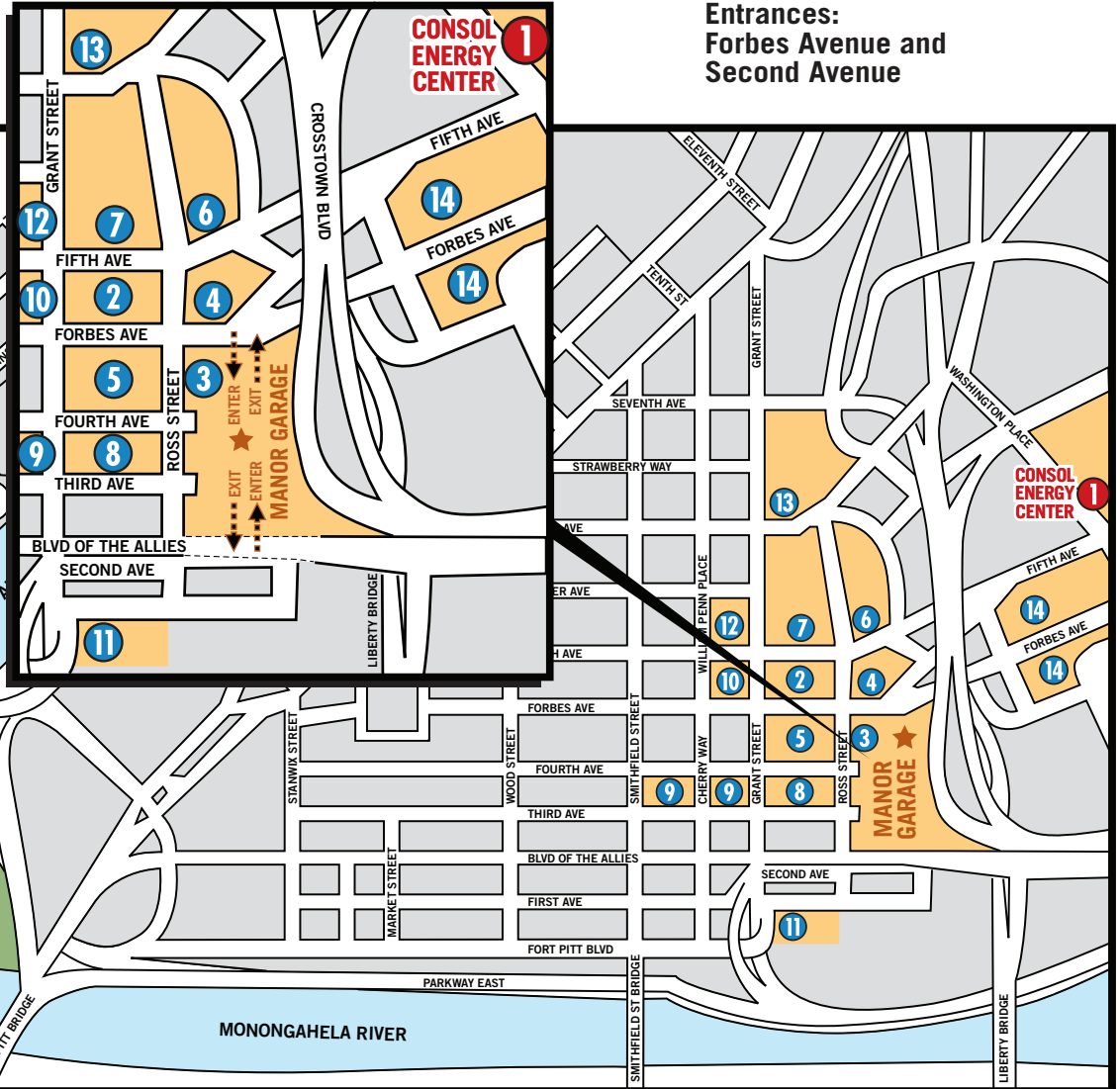


**Garage Address for GPS:**  
564 Forbes Avenue  
Pittsburgh, PA 15219

**Entrances:**  
Forbes Avenue and  
Second Avenue

## CONVENIENT TO:

- 1 Consol Energy Center
- 2 County Courthouse
- 3 County Office Building
- 4 Juvenile Court
- 5 City County Building
- 6 BNY Mellon Client Service Center
- 7 One Mellon Center
- 8 Grant Building
- 9 Oxford Centre
- 10 Frick Building
- 11 PNC Firstside Center
- 12 Union Trust Building
- 13 US Steel Building
- 14 Duquesne University



## Downtown Parking with Easy Access to the Liberty Bridge, 376 East, 279 North and South

- Convenient Daily Commuter Parking
- Enter and Exit on Forbes Avenue or Second Avenue
- Credit Cards Accepted at All Pay Stations:  
Visa, MasterCard, American Express, and Discover

## Recommended Exits

- To Liberty Bridge use Forbes Avenue exit. Turn right on Forbes Avenue and take next right to Liberty Bridge ramp.
- To 376 E use Second Avenue exit. Turn left on Second Avenue and follow signs to 376 E.
- To 279 S use Second Avenue exit. Turn right on Second Avenue and left on B Street. Follow the signs to Fort Pitt Bridge.
- To 279 N use Second Avenue exit. Turn right on Second Avenue and right on Ross Street to Veterans Bridge (579 N).

## Day Rates:

- 0 - 1 Hour – \$8.00
- 1 - 2 Hours – \$10.00
- 2 - 3 Hours – \$12.00
- 3 - 24 Hours – \$13.00

## Night Rate:

4:30pm-6:00am – \$4.00

## Weekend Rate:

Saturdays – \$4.00

## Monthly Lease:

Lease – \$200.00

**APPLY FOR  
A LEASE  
ONLINE AT  
[AlcoParking.com](http://AlcoParking.com)**

Parking Garage Operated by:



**ALCO PARKING**  
CORPORATION  
412.323.4455  
[www.alcoparking.com](http://www.alcoparking.com)